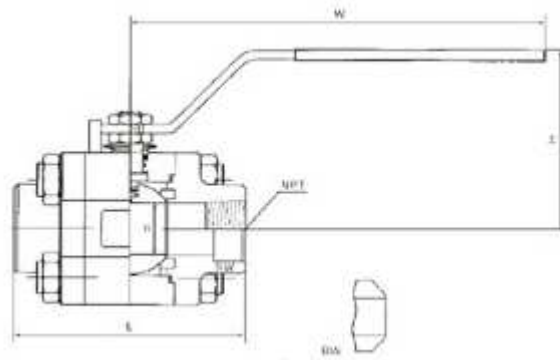




CLASS800-1500 FORGED STEEL BALL VALVE



Features:

Class800-1500 Forged Steel Ball Valve

Standards Compliance

1. Design and manufacture conform to BS5351 MSS SP-118;
2. Connection ends conform to:
 - 1) Socket welded ends conform to ANSI B16.11; JB/T1751
 - 2) Screw ends conform to ANSI B1.20.1; JB/T7306
 - 3) Butt-welded ends conform to ANSI B16.25; JB/T12224
 - 4) Flanged ends conform to ANSI B16.5; JB79
3. Test and inspection conform to: API 598; GB/T13927; JB/T9092
4. Structure features: Bolted bonnet; three-piece;
5. Materials conform to ANSI/ASTM;
6. Main materials: A105; LF2; F5; F11; F22; 304(L);316(L); F347;
F321; F51; Monel; 20Alloy.

Main Dimensions

Class	F.P	1/4	3/8	1/2	3/4	1	1-1/4	1-1/2	2	
800-1500lb	L1	92	92	92	111	127	140	152	152	
	W	108	108	108	146	178	178	200	200	
	H	51	51	51	108	81	85	105	105	
	d	CL800	6	9	13	18	23	28	35	49
		CL1500	6	9	13	19	25	32	38	49
Weight(kg)		2.3	2.4	2.5	3.4	5.4	6.4	11	13	



		2.3	2.4	2.5	3.7	5.8	6.8	11.5	13.7
--	--	-----	-----	-----	-----	-----	-----	------	------